

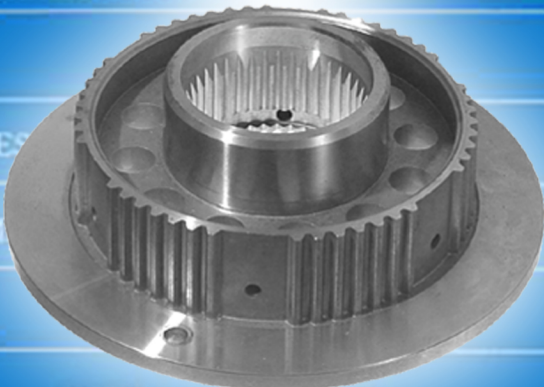
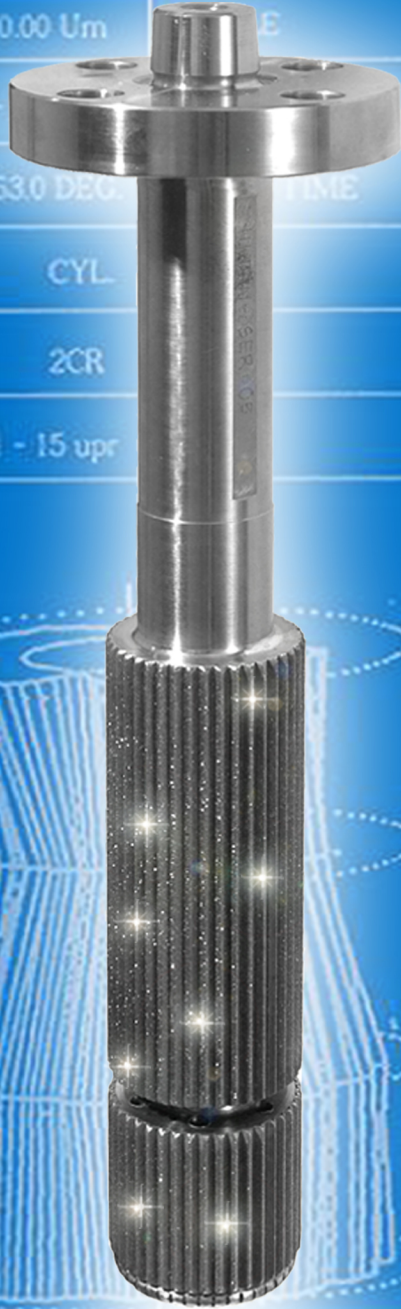


# Diamond Broaching

For additional information on our full-line of ACCU-CUT Machines & Tools visit our web site at [www.accucutdiamond.com](http://www.accucutdiamond.com)

## Tool Benefits

- Rapid Cycle from 7 seconds
- Stock Removal .0035"
- Long Tool Life - over 25,000 Parts
- Cp : > 2.0
- Surface Finish : 16 Ra
- Total Profile Error : < .001
- Pitch Tolerance : < .001
- Index Tolerance : < .008
- Improved Product Geometry
- Lower Cost per Part
- FAST TOOL TURNAROUND
- NEW TOOL AT 6 WEEKS
- RECOATED TOOLS AT 2 WEEKS
- DUPLICATE TOOLS AT 3 WEEKS



## Machine Benefits

- Automatic Cycle
- Automatic Stock Sensing
- Automatic Load & Unload
- Automatic Tool Pulse for Heavy Stock Removal
- Windows-Based Control System
- Touch Screen Display
- Automatic Gauging
- Automatic Tool Comp.



4238 N.Sayre - Norridge, IL 60706  
Ph: 708-457-8800 Fax: 708-457-8061  
Email: [info@accucutdiamond.com](mailto:info@accucutdiamond.com)

4640 N.Oketo - Harwood Heights, IL 60706  
Ph: 708-867-8788 Fax: 708-867-7886